

# **Chris Westwood Charity**

**For Children with Physical Disabilities**



## **Progress Report as at 31st December 2015**



**Charity Commission Registration Number 1101230**

# What Do We Do?

## Background

The Charity was founded on the 19<sup>th</sup> November 2003, specifically to help children and young people with physical disabilities, in Stourbridge and the surrounding areas, which for practical reasons we defined as being within a 50 mile radius of Stourbridge. The Charity Commission registered number is 1101230.

The stated aim is the provision of financial assistance, at the discretion of the Trustees, to provide the relief of physically handicapped children. This includes improvement to the quality of life by the provision of financial or other assistance, or any other purpose the Trustees deem to be in accordance with the stated aim.

We grant small sums for specific uses, where a significant difference can be made to both the life of the child or young person, and the family. We try to fill the gaps left in the State support system, we are very keen to give a rapid response, usually within 24 to 48 hours, as sadly a number of cases involve degenerative conditions, or are life limited, with time being critical, and we aim to achieve all of this with no administration or operating costs.

## Typical Areas of Assistance Provided to date

- Special exercise equipment, special exercise tricycles, walkers, and standing frames, to assist in regaining and maintaining mobility
- Wheelchairs, special mobility chairs, special car seats, special seating, special beds, and support and lifting equipment, to improve the quality of life

## How we Assess Grant Applications

Following an initial approach, we request the submission of a detailed grant application. In order to assess the position, we typically require the following:

- Background and reason for the request
- Supporting information from a suitable professional person detailing the medical position and the advantages of the proposed equipment purchase
- A detailed quotation, following assessment by the supplier's competent person
- Details of any funding already raised, any other sources of funding, and the financial position of the family

Then, provided that we are assured that our help will be for those in real need, the application is in accordance with our grant criteria, and we have the funding available, it can be considered for approval. Grants are provided by a cheque payable to the supplier, to ensure that the funds are only used for the intended purpose. All remaining order and delivery arrangements are then left to the applicant, so that we are not involved in any administration costs.



[www.chriswestwoodcharity.co.uk](http://www.chriswestwoodcharity.co.uk)

## The Organisation

Sadly, we have to report the death of one of the four Trustees, Martyn Morgan, on 10<sup>th</sup> December, after a short illness. The photograph below was taken at the last Trustee Meeting on 15<sup>th</sup> October.

Martyn was a great supporter of the Charity, and was involved very actively in many fundraising events, often using substantial resources from Quality Solicitors Talbots to ensure that the usual high standard of preparation and organisation was maintained to his satisfaction. We particularly remember the various sponsored cycle rides (in excess of 100 miles), which he always seemed to accomplish with ease. He was an ambassador for us, constantly working to promote and help us, and as a founding trustee, he was proud of what we had achieved. Our first twelve years of operation have provided a solid base for our long term growth, and we shall continue to try to expand the work of the Charity.

We intend to continue with three Trustees for the time being, as we did when we originally set up the Charity in 2003 (*Janine joined us in 2007*). Our method of operation will also continue as before, with formal Trustee meetings being held twice a year. With no employees, and all the necessary work done on a voluntary basis, there are no administration expenses incurred, enabling us to maximise the use of the funds we raise. The Trustees are in regular contact for all routine management decisions, and any additional meetings required can be arranged at short notice.



*l-r: Martyn Morgan    Chris Westwood    Janine Barnes    Graham Wood*

## What have we been up to in 2015?

We had hoped to start by reporting the continued successful growth of the Charity during 2015, but, sadly, as already reported, events overtook us with the loss of one of the original three Trustees, Martyn Morgan, who passed away after a short illness on the 10<sup>th</sup> December. This was totally unexpected and a complete shock. Martyn was a great supporter of the work of the Charity, and his name appears in every Annual Progress Report, usually with a photograph from yet another fund raising event where he has taken the initiative in both organising, and leading the way. This report contains details of another Property Conference he organised during the year, amongst other things, and his drive, enthusiasm and support will be much missed by us.

We began 2015 with our reserves having improved a little on the start of 2014, but activity rapidly picked up in January as outstanding grant applications, for which we had awaited more information, were completed, along with a surge in new applications. Despite our fundraising efforts, and particularly those of our supporters, the surge in requests for help meant that by mid year we were almost out of funds, although we were aware of an impending legacy, and we had been trying to balance it's arrival with our fundraising.

In July we received the legacy from the estate of a relation of the Founder, who had died in December 2014. Mary Raybould had been widowed in 2011, and she had very kindly changed her Will to help the Charity in the event of her death. The original legacy proposed was subsequently increased significantly, as a potential beneficiary unexpectedly predeceased her, so she increased the Charity's share of the estate. We have received £93,000 to date, with a small amount still to be finalised, which has had a major impact on our funding position. Mary was a great supporter of our work, very interested in what we were doing, and we know that she would have been very pleased to have made such a difference.

The Founder, to his surprise, was nominated for an Award in the 2015 New Year's Honours List, in respect of the work achieved by the Charity. This was greatly appreciated, and may possibly help the profile of the Charity in the future.

In the following pages we have detailed a few of the events that were held, covering the efforts by Jane Grove in the Wolf Run, the Racketball Marathon at Stourbridge Tennis Club, the Quiz Night, and the Property Conference, held by QS Talbots. Many other supporters that we depend on, particularly some of our regulars such as Sunrise Medical and the Redlake Consultancy have again helped us, and they are all much appreciated and much needed, but we sadly have limited space to mention everyone.

On November 19<sup>th</sup> we completed 12 years of activity, and during 2015 we completed 63 grants amounting to £87,270.34. With the additional funding in place, we were able to cope with the rapid rise in activity in the second half of the year, achieving 47% growth in 2015 compared to our work in 2014. We surely must be approaching the limits of the funding we can raise, but we can only wait and see what 2016 brings, probably to confound us yet again. What we do achieve is only due to the help we receive, and we would like to thank everyone for their continued, and much needed, support. We face another challenge in the year ahead!



## Some thoughts on our Plans for 2016

During the year we achieved the 47% growth in activity over 2014 that we have already reported, maintaining our average growth of 43% per annum compound over the last nine years. Once again, we have been able to complete a year with zero expenditure on administration, and approving every application that satisfied our grant criteria. We have now reached 320 grants made, and £353,000 granted since we started 12 years ago.

The wonderful gift of the legacy has meant that we start 2016 with sufficient reserves for 11 months work at the current rate of activity, or 7 to 8 months after allowing for the continued growth we expect to see. Our problem is that the receipt of such a large donation is a “one off” event, and having helped our continued growth, we must now find ways of replacing it in future years.

While the current level of reserves may give the impression that we have ample funding in place, we already have several concerns. We still need to continue active fundraising as, with the further anticipated expansion in demand, we may need to raise another £50,000 during the year, just to end 2016 with the reserves nearly exhausted. We are aware of several possible new income sources, but we still have considerable work to do. Once again, with the help of our supporters, we would hope to be able to raise the additional funding to provide the help needed in the coming year.

Our main concern will then be 2017, as we need to not only raise the additional funding to ensure a successful 2016, but if we then experience the expected further growth in 2017, we shall need to start the year with significant reserves to help us through the early months, before further fundraising income can be generated. Otherwise, we may well finally reach the point where we can no longer fund every application we wish to. Having seen so many children in real need, we must try to continue to generate the additional income required.

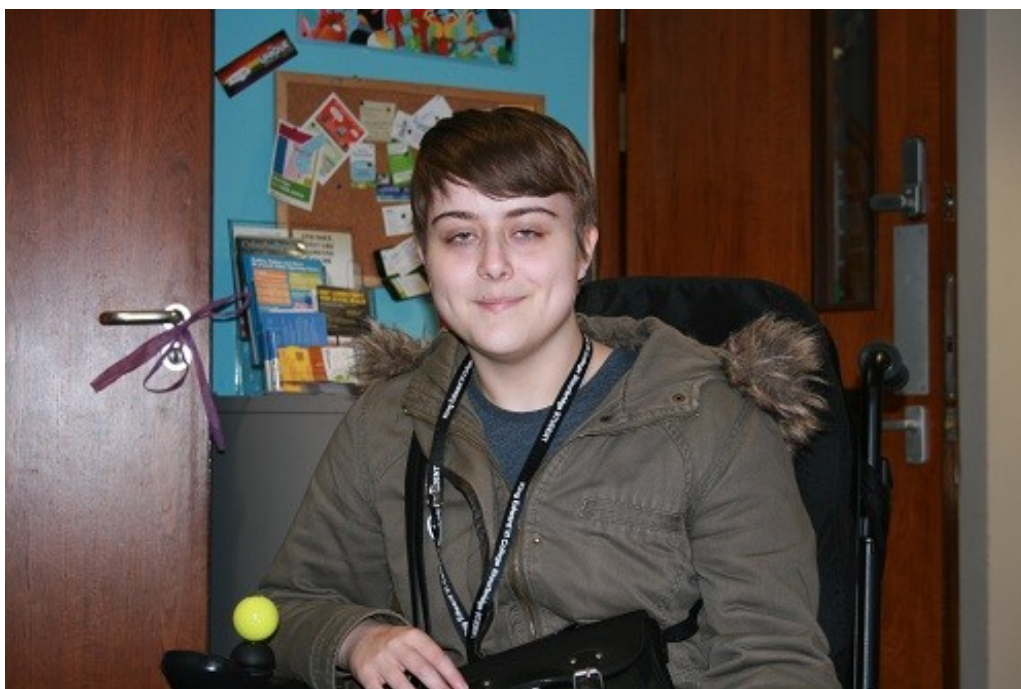
While we shall try to develop new potential sources of funding, there is one existing area we would like to highlight, which is regular monthly donations. We now have 11 contributors, raising £3,885.00 (incl. Gift Aid), in a full year, and this has been rising steadily, particularly recently. We would like to encourage further growth with any amount from £2/month upwards, and ask that if our supporters can persuade anyone to contribute, and could they then ask them to try to find two more people prepared to contribute small amounts. If we could “snowball” the donations in this way, we might just be able to generate a more significant, and stable, source of additional funding.

So our plans for 2016 are to continue to try to build relationships with other groups who will help to fund us, and we have optimism for some further success in this area, continue to try to develop our stable income sources such as regular donations, ensure our keen supporters are aware that we really appreciate every small collection, the cumulative total of which makes a big difference, and begin to further develop the income and reserves, ready for the anticipated expansion in 2017. As always, plenty of work to do.



# How a Donation Can Help (1)

## Wheelchairs.....



“My name is Chloe and I have Cerebral Palsy. This means that I can only walk for a few minutes without getting tired and have very bad balance, so I'm a wheelchair user. I just wanted to thank the Charity as they recently funded my new power wheelchair. I could write and write about how much it means to me, but I'd end up writing thousands of words: so I'll keep it brief. This wheelchair has absolutely changed my life in ways I never thought possible. My old wheelchair was absolutely rubbish in the worst possible ways - it could dangerously veer on any kind of slope or ramp and was just very awkward to drive as it was an old model, I'd had it for 7 years and even though I asked the Health Service I couldn't get anything better. But now, with my new power wheelchair I actually have the ability to higher my seat so that I can reach the high shelves in supermarkets, and I have the latest technology which means I don't have to worry about dangerously veering on pavements and ramps that aren't completely on kilter. Thank you for finally giving me the wheelchair I've dreamed of since I was little. Thank you for giving me independence, and for giving me a wheelchair that I'm proud of and one that I can trust to do what it's supposed to! I'll be forever in your debt for the fact that you generously funded this chair. Thank you”.



[www.chriswestwoodcharity.co.uk](http://www.chriswestwoodcharity.co.uk)

## How a Donation Can Help (2)

### Special Support Chairs.....



Dominic is seven years old and has Kabuki Syndrome, and Club feet. He is unable to stand or walk unaided, and requires constant help. Being unable to support himself, gives rise to problems with his personal care needs, and this special chair is designed to hold and support him. Although it cost £2,391.62, it has given him more independence, as it is designed to fit over the toilet while holding him correctly, and it can also be used in the shower.

While there will always be limitations on what he can achieve, we were pleased to be able to help with an item which will give him a little more independence.

## How a Donation Can Help (3)

### Special Tricycles.....



Alfie is seven years old and has a diagnosis of Neurofibromatosis Type 1 (*a tumour disorder, which causes tumours along the nervous system, and in his case it results in frequent falls, and he has to spend most of his time in a wheelchair*). A special exercise tricycle was recommended by his Paediatric Physiotherapist to give him some freedom from his wheelchair, improve his mobility and help to exercise his muscles.

His family kindly supplied the above photograph, and have told us that the use of the tricycle over the last 6 months has really helped him to develop physically.



## The Cost of Equipment Purchased

Type of Equipment	Number Purchased	Price Range of the Items	Total Amount spent on this Group
Special Support Car Seats *	10	£313.88 to £838.08	£4,981
Special Support Chairs	9	£435.50 to £2,456.41	£13,949
Special Exercise Tricycles *	7	£890.43 to £1,546.85	£7,674
Wheelchairs *	5	£3,040.00 to £5,418.90	£17,707
Safety Sleep Systems **	5	£1,949.35 to £2,143.54	£10,204
Acheeva Bed/Seating Systems * <i>(two units co-funded)</i>	3	£4,495.34 to £5,147.17	£9,395
Impaired Vision Computer Readers	3	£987.98 to £3,436.67	£7,820
Toilet Chairs	3	£406.00 to £2,391.62	£3,204
Standing Frames <i>(one unit co-funded)</i>	2	£1,273.00 to £2,885.00	£2,715
Small & Miscellaneous	16	£78.50 to £3,150.00	£9,621
<b>Total Grants for the whole of 2015</b>	<b>63 grants</b>		<b>£87,270</b>

\* In these cases we have agreed discounts with the suppliers on the original quoted prices.

\*\* These items were imported from the USA, but after a subsequent substantial price rise, the UK agent has developed a UK produced model which will become available once approval has been gained. The prices were ex USA after a special bulk discount had been negotiated, and before the subsequent price rise.

During 2015, we made 63 grants, totalling £87,270, and of these, 16 were classed as small or miscellaneous. If we look at this group and remove one large miscellaneous grant of £3,150, the other 15 grants, or 23.8% of the total, cost only £6,471, or 7.4% of the total expenditure. These covered a range of small items, including special head protection, safety harnesses for car seats, and accessory packs for special buggies, which the NHS does not fund although they are much needed (rain cover etc.). Each year we find that we receive a number of requests for relatively small sums for such items, which, if granted, often make a major difference to a family, and this is an important part of our work. One small collection could easily fund a small grant, which is why we value all donations, irrespective of size. So, while this report has highlighted our work with the provision of the larger, and more expensive items of equipment, we would like to add that in approximately one quarter of the cases we see, a small grant makes all the difference.

The range of prices paid for a particular type of equipment has also been given. There are considerable variations which are caused both by the size of the equipment, with major differences between the items for young children, and those of teenage years and above, and the detailed specification, which varies greatly, often depending on the level of support required, as determined by the degree of disability. It does, however, give an idea of what costs we face, and how some of the larger donations received can quickly become fully committed.

## A Selection of the Grants Made in 2015

Age	Grant	Details
Yrs	£	
3	78.50	Mild Cerebral Palsy, global development delay, and he struggles to walk. Wheelchair Services provided a suitable buggy, but they never provide the accessory pack (rain cover, sun shade etc.). This limits outside use, and with the family unable to raise the funding, we agreed to purchase the items additionally required.
5	3,395.00	Cerebral Palsy, and complex visual impairment problems. He is very bright, and reading well already, but requires magnification to at least 36 point size due to his sight problems. The Children's Visual Impairment Service has funded a video magnifier for use at school, which has many functions, including line segregation and variable magnification, which greatly helps him to read. We were asked if we could help with funding a similar unit for home use, which although expensive, will make a big difference to his access to printed pages. We agreed to fund the full cost in view of the benefit to him.
1	391.88	She has spent most of her first year in hospital, has CHARGE Syndrome, a tracheostomy, and visual and hearing difficulties. She needs regular visits to hospital, but suffers discomfort and distress when using her existing car seat, and we were asked to fund a special support car seat and harness system for her, which we approved.
	2,000.00	Request from Fort Royal Special School for help with raising the funding for an Acheeva bed, needed to replace a nine year old unit, for use by a child registered blind, Club feet, Microcephaly ( <i>smaller than normal head size due to abnormal brain development</i> ), profound and multiple learning difficulties, little control over body movements, with no independent mobility and unable to sit unaided. The school had raised £2,500.00 towards the original quote of £4,718.00. With our agreed discount, a further £2,000.00 funded the purchase.
9	804.60	He has a rare chromosome deletion resulting in severe health problems, epilepsy, development delay, learning disabilities, and movement problems. He currently has to use a hard structured seat at home, into which he has to be securely strapped, and the request was for help with funding a special chair, which is comfortable to sit in, holds him in the correct posture, and into which he can be secured. The cost was £804.60, and we agreed to fund.
	406.00	Penn Hall School Outreach Service requested help with a toilet chair, to be used for assessing mainstream pupils with special needs, and to be used by the Penn Hall residential facility when not on loan to a mainstream school. We agreed to provide the funding required.

## A Selection of the Grants Made in 2015 (Cont.)

Age	Grant	Details
Yrs	£	
5	2,006.35	She has Cerebral Palsy and Epilepsy, is very restless when sleeping, and has fits, resulting in her falling out of bed. Various guard systems have been tried, but none found suitable. With Occupational Therapy already having funded a number of items for her, there was no other funding available, although a solution was urgently required. The proposal was to fund the purchase of a safe sleep system, which is manufactured by an American Company, and has proved very successful in similar cases. Having reviewed the market for other equipment, and specialised beds, the proposal was felt to offer the best option. With the family requiring help, we agreed to fund the purchase.
1	537.48	Child is life limited and receiving palliative care. Very difficult to settle her comfortably, and mother has to spend most of the day and night cradling her. A P Pod bean seat has been tested by the family and found to provide a comfortable and secure resting place for her, so we approved the funding.
6	1,442.50	Spastic quadriplegic cerebral palsy, visual impairment, epilepsy, and unable to mobilise himself. His hips are at risk of dislocation, and a standing frame has been recommended for school use, similar to one used at home. With his school already having funded two types of wheelchair and a hoist, we were asked if we could help, and we agreed to co-fund half the cost with the school.
	100.00	He has a diagnosis of autism, and has attachment difficulties. He is moved around in a buggy due to problems with his feet, but when he is in the car, he releases himself from the car seat, and presents a danger to the driver. With the family now a single parent and in rented accommodation following domestic abuse, we were asked to help by contributing £100.00 towards the cost of a suitable restraint system, to ensure his safety when being transported (estimated at £116.80 plus delivery), and we agreed to help.
1.5	355.00	Krabbes disease, which is a degenerative condition, usually fatal following a steady loss of control functions. He has started to lose head control, and active movement of both arms and legs, and needs a lot of support. We agreed to fund the cost of a special car seat with a tilt/turn facility to assist lifting him in and out of the seat.
3	992.43	Left Hemiplegia, which has left her with weakness, some walking problems, and limited control. A special exercise tricycle was recommended by her Paediatric Physiotherapist to build muscle strength, and improve her mobility and control. We agreed to fund.

## The Wolf Run - 11th April 2015



*l-r: Jane Emma Sara*

Jane Grove (a Trustee of the GIL Charitable Trust who also helped us with a grant during the year) took part in the Wolf Run to raise funds for the Charity. In her own words:

“This challenge involved a 10km wild run across open countryside which included natural and man-made obstacles. The three of us began training in October but, although we were all reasonably fit, nothing quite prepared us for the day itself! It was a fine day but temperatures did not reach double figures and there was a severely cold wind. Not only did we have to wade through icy cold muddy water we also had to swim across a lake which took about 15 minutes. We had to crawl through mud pits, run over boggy ground and climb cargo nets; the worst, for me, was shooting down a massive mud slide. The three of us ran with 6 other she-wolves and there was fantastic team spirit and camaraderie! We all helped each other through the difficult obstacles and managed to laugh when we fell in the mud! The atmosphere at the end was terrific as our supporters were at the finishing line with cameras, cake and hot drinks at the ready! It took several baths and showers to get clean but we are so proud of our achievement; primarily to raise funds to support the Chris Westwood Charity for Physically Disabled Children but also to get the tee shirt! “

*With Gift Aid added to the donations, the Charity will receive over £1,500.00. Very well done!*



[www.chriswestwoodcharity.co.uk](http://www.chriswestwoodcharity.co.uk)

## Property Conference

On Tuesday 6th October, QS Talbots Solicitors organised a Property Conference, held at the impressive Offices of DRP Group, on the Ikon Trading Estate, Hartlebury.

The event was very well received, and the Charity was fortunate to have been able to benefit. Our Legal Trustee (Martyn Morgan) was a Senior partner of QS Talbots, and organised the event.

We were looked after very well by DRP Group, with the option of a site tour of their offices, after the Conference, which a number of the 150 delegates who attended took up.

Martyn had organised a varied and interesting group of speakers, and kindly arranged for the Charity to benefit from the proceeds of a raffle. In addition, with further contributions from several organisations with stands, and subsequent donations, a total of just over £2,000.00 was raised.



*Justin Urquhart Stewart Martyn Morgan Peter Bolton King Chris Westwood*

The photograph shows two of the celebrity speakers, Justin Urquhart Stewart who regularly appears on Business programmes on television, and who gave everyone a fascinating insight into the current World situation, and prospects for the future, and Peter Bolton King who gave us his insight into the Property market in 2016.



[www.chriswestwoodcharity.co.uk](http://www.chriswestwoodcharity.co.uk)

## The Racketball Marathon

The event was again held at Stourbridge Tennis Club, on Saturday 16th May, and organised by Sue Bartlett (Racketball Chair), and Carolyn Alden, two of our great supporters, who once again ran the event. We must also thank Stourbridge Tennis & Squash Club for allowing us to use a court for the day.

Singles and doubles matches were played throughout the day, and a number of participants kindly donated amounts significantly greater than the £10 per person suggested. This resulted in a total of £225.00 being collected, of which £220.00 was eligible for Gift Aid of £55.00 (which will be claimed in April 2016), and additional coinage of £1.20, which with GASDS (Gift Aid Small Donation Scheme) will allow a further 30p to be claimed in April 2016, bringing the final total to £281.50.

It was also an opportunity to promote the Charity, and the event provided much needed funds, particularly at that point in the year. Thanks again to everyone who participated, contributed, and especially to our organisers.

## The Quiz Night

The event was held this year at St Saviour's Church Hall, in Hagley, rather than our previous location at the Hagley Community Centre. It was again very well supported with 120 competitors, divided into sixteen teams, most containing between five and eight people.

A number of difficult quiz rounds followed, including an identification round of thirty one Hollywood stars, from pictures of when they were young. During a half time break, Fish & Chips were served, all included in the entry price of £10.00.

Battle then recommenced, and we finished with a particularly difficult final round.

The editor's team improved their position on 2014 (sixth), coming in fourth, Aguilera were third, the Born Losers defied their name and came in second, but the clear winners were the Agatha Christie team. Additional funding was raised from a raffle (£300.00), and the bar was kept busy throughout the evening.

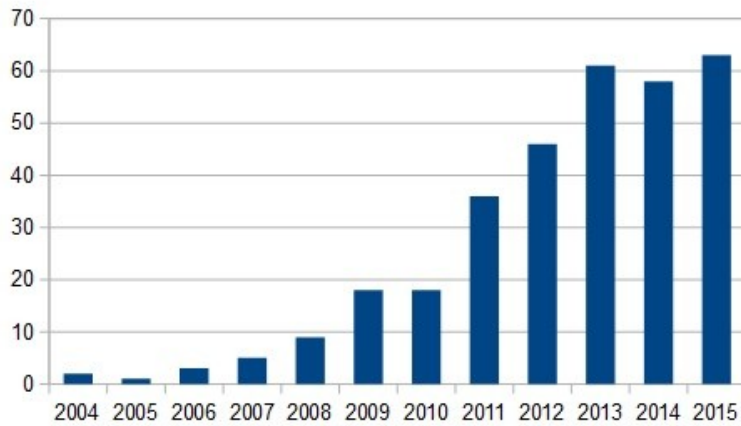
The final result was a very healthy profit of £1,140.00, which will be very useful, and we must once again thank Carolyn & Miles for all their hard work in organising the event, and Lyn & Nick for the excellent way the Quiz was organised and run. If we are able to run the event again next November, can the editor's team improve again?



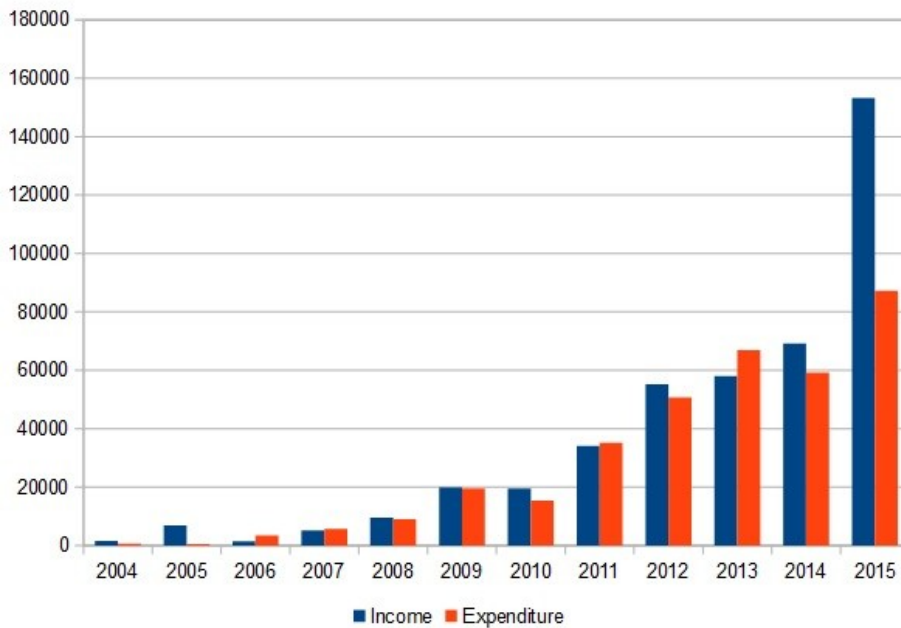
[www.chriswestwoodcharity.co.uk](http://www.chriswestwoodcharity.co.uk)

# Funds Raised and Grants Made to Dec 31<sup>th</sup> 2015

Number of Grants Made each Year



Annual Income (£) vs Grants Made (£)



During 2014, 58 grants totalling £59,283 were completed, with several pending, and with a further increase in our fundraising, it gave us an opportunity to rebuild the reserves for 2015. It also meant that we had then completed more than 250 grants, with more than £250,000 granted.

2015 began with a rapid increase in activity, and even with additional fundraising, our reserves were severely depleted. A substantial legacy, received mid year, made a dramatic difference, allowing us to continue our work, and we completed the year having made 63 grants at a cost of £87,270, an expansion of 47% on 2014, and bringing the totals since inception in November 2003 to 320 grants, and £353,000 granted, all with no administration costs.



# Our Accounts

<b>Cash Balance brought forward at 31.12.14:</b>		<b>14,064.00</b>
<b>Income:</b>		
(a) Fundraising Events		
<i>Collected Directly</i>	4,849.55	
<i>Collected by Charities Trust (incl. Gift Aid) on sponsorship pages</i>	2,726.63	
<i>Paul Matty Car Valuation Donations</i>	300.00	7,876.18
(b) Gift Aid: <i>(April 2014 to April 2015 – claimed directly from HMRC)</i>		3,493.54
(c) Standing Orders – Payments received		2,530.00
(d) Personal Donations		8,620.00
(e) Company Donations		6,506.59
(f) Wolves Community Trust Support		3,500.00
(g) Grants from other Charitable Foundations and Organisations		
<i>Robert McAlpine Foundation</i>	15,000.00	
<i>Other Charitable Foundations</i>	12,500.00	27,500.00
(h) Collection Boxes		127.68
(l) Interest on Bank Balances		19.14
(j) Legacy from a Deceased Estate		93,000.00
(k) Early Donations received to the Collection in Lieu of Flowers for Martyn Morgan		75.00
<b>Total Income:</b>		<b>153,248.13</b>
<b>Expenditure:</b>		
Grants made in the year to date: 63 in Total		87,270.34
Other expenditure/costs/overheads		nil
<b>Total Expenditure:</b>		<b>87,270.34</b>
Excess of Income over Expenditure:		65,977.79
<b>Leaving a cash balance at 31.12.15 of:</b>		<b>£80,041.79</b>



# How Donations can be made to us

*In addition to donations by cash or cheque, can we suggest consideration of the following:*

## Standing Orders

Any amount from £2/month upwards is of great value to us, and only requires the completion of a Standing Order Mandate, which can be stopped, or changed, at any point in the future, should you wish. The Standing Order Mandate goes directly to your bank, so we never see it, or any of your bank details.

A copy of the required Bank Mandate is available towards the end of this booklet, and should you choose this method, could you please complete a Gift Aid form, if you have not already done so, as this enables us to reclaim the tax at the year end.

## Gift Aid

If you are a UK tax payer, you can increase the effectiveness of your donation by completion of a gift aid declaration form, a copy of which is available on the next page. If the third box down, of the three options on the form, is ticked, the completion of one form will cover all donations past, present and future. HMRC treats the donation as if the donor had already paid basic rate tax, and the Charity can then reclaim this tax to increase the value of the donation. The Charity will receive an additional 25p for every £1 donated, which we claim annually from HMRC.

Please return any completed forms directly to Quality Solicitors Talbots (address on the form).

## Online Donations

(a) By Internet Bank Transfer, direct to our nominated bank account:

**Bank details for Online Donations are:**

HSBC Bank, Sort Code 40-43-17

Account Number 72275813

*Could you please use your name as the payment reference, so that we can track the payments into our account, and claim Gift Aid, where appropriate.*

(b) From our website, using the "Everyclick" Donation button:

A donation button has been created on the Chris Westwood Charity website, to allow individual donations to be easily made online, and access can also be gained to our Every Click webpage via [www.everyclick.com/chriswestwoodcharity/info](http://www.everyclick.com/chriswestwoodcharity/info).

*Anyone kindly wishing to set up a sponsorship page is encouraged to use the Everyclick facility, as we are registered with them, and we do not pay any additional costs.*



[www.chriswestwoodcharity.co.uk](http://www.chriswestwoodcharity.co.uk)

# Gift Aid Declaration

*giftaid it*

**The Chris Westwood Charity for Children with Physical Disabilities.**

## Please Treat

The enclosed gift of £\_\_\_\_\_ as a Gift Aid Donation; OR

All gifts of money that I make today, and in the future, as Gift Aid Donations; OR

All gifts of money that I have made in the past 6 years, and all future gifts of money that I make from the date of this declaration, as Gift Aid Donations.

✓ Please tick the appropriate box above.

In order for us to claim Gift Aid, you must be paying an amount of Income Tax and/or Capital Gains Tax at least equal to the tax that the Charity will claim from HMRC on your Gift Aid donation. Currently, we are able to claim 25p for every £1 of eligible donations.

## Donor's Details

Title \_\_\_\_\_ First Name \_\_\_\_\_ Surname \_\_\_\_\_

Home Address \_\_\_\_\_

\_\_\_\_\_

\_\_\_\_\_

Postcode \_\_\_\_\_ Date \_\_\_\_\_

Signature \_\_\_\_\_

### ***Please notify the Charity if you:***

1. Wish to cancel this declaration
2. Change any of the Donor details
3. No longer pay sufficient tax on your income and/or capital gains.

Please send form to: FAO Chris Westwood, c/o Quality Solicitors Talbots, 63 Market Street, Stourbridge, West Midlands. DY8 1AQ.

## STANDING ORDER MANDATE

<b>To the Manager</b>	
<b>Name of Bank</b>	
<b>Address</b>	
<b>Post Code</b>	

Please pay: **HSBC Bank, 114 High Street, Stourbridge, West Midlands. DY8 1DZ**

For the credit of: **Chris Westwood Charity for Children with Physical Disability**

Sort Code: **40-43-17**

Account Number: **72275813**

The sum of: (in words) _____ Pounds (£) _____
On the _____ (day) _____ (month) _____ (year)
And thereafter every month until further notice, and debit my account accordingly.

<b>Name of account holder to be debited:</b>
<b>Account Number:</b>
<b>Sort Code:</b>

Signed: \_\_\_\_\_ Date: \_\_\_\_\_

***When completed, will you please pass this form directly to your Bank.***

*If you are a UK tax payer, and pay an amount of Income Tax, and/or Capital Gains Tax, at least equal to the tax that can be claimed on your donation, you can increase the value of your gift by using Gift Aid. This enables the Charity to reclaim the tax, which currently increases the value of your gift by 25p for every £1 donated.*

*If you would like to help, will you please complete a Gift Aid form, and return it to:  
Chris Westwood Charity for Children, c/o Quality Solicitors Talbots, 63 Market Street,  
Stourbridge, West Midlands. DY8 1AQ.*

If you would like to contact us:

For the attention of Chris Westwood,  
Chris Westwood Charity for Children with Physical Disabilities,  
c/o Quality SolicitorsTalbots,  
63 Market Street,  
Stourbridge,  
West Midlands.  
DY8 1AQ.

*Tel:* 01384 445850

*email:* [chriswestwood@waitrose.com](mailto:chriswestwood@waitrose.com)

The following organisations have provided help to the Charity at no cost:

**Quality Solicitors Talbots :** Provision of Office facilities, Marketing, Event Organisation, and general help and advice. (01384 445850)

**Holmdale Print & Mail:** Provision of Document preparation, and Printing services, including all of our publicity material. (0845 367 1206)



[www.chriswestwoodcharity.co.uk](http://www.chriswestwoodcharity.co.uk)